



Flight Plan & Site Survey

Created using **RPAS Wilco®**

Operation Name:	Hespeler
Pilot Name:	[REDACTED]
Pilot Certificate:	[REDACTED]
Flight Start:	May 24, 2023 12:54 PM
Flight End:	May 24, 2023 2:54 PM
Flight Area (Latitude):	43° 27' 45.10" N (43.463)
Flight Area (Longitude):	80° 18' 38.00" W (-80.311)
Altitude - Radius:	Alt: 700 ft - Rad: 926.0 m (0.5 nm)
Airspace:	CONTROLLED
FIR - Contact:	CZYZ - 905-676-4509

Please ensure you received all required authorizations prior to flight.

Disclaimer

This Site Survey was created using RPAS Wilco by AIM Robotics. The flight plan contained is intended only for RPAS flights on the date/time and location specified. The user accepts all responsibility for the accuracy and completeness of the information contained.

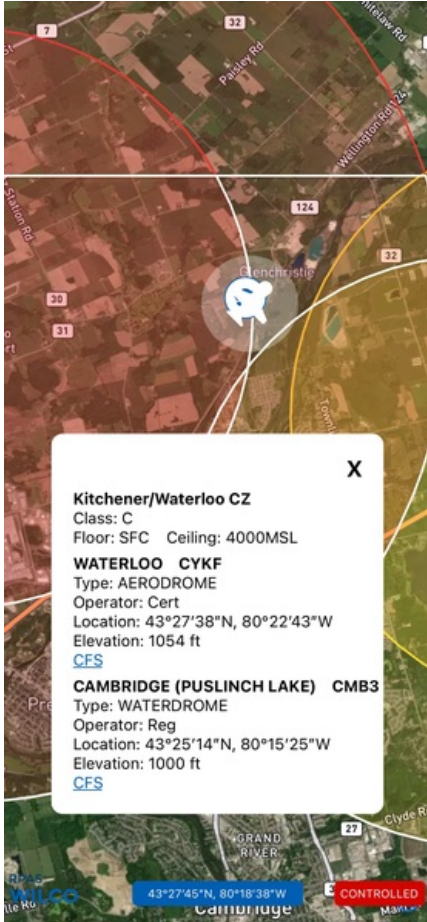
For the complete Terms & Conditions, see

<https://rpswilco.com/#/tnc>



Included

- Site Survey
- Obstacles (if available)
- Nearby Aerodromes
- Canadian Aviation Regulations
- GFA
- Aerodrome Supplements
 - METAR & TAF (if available)
 - NOTAMS
 - CFS

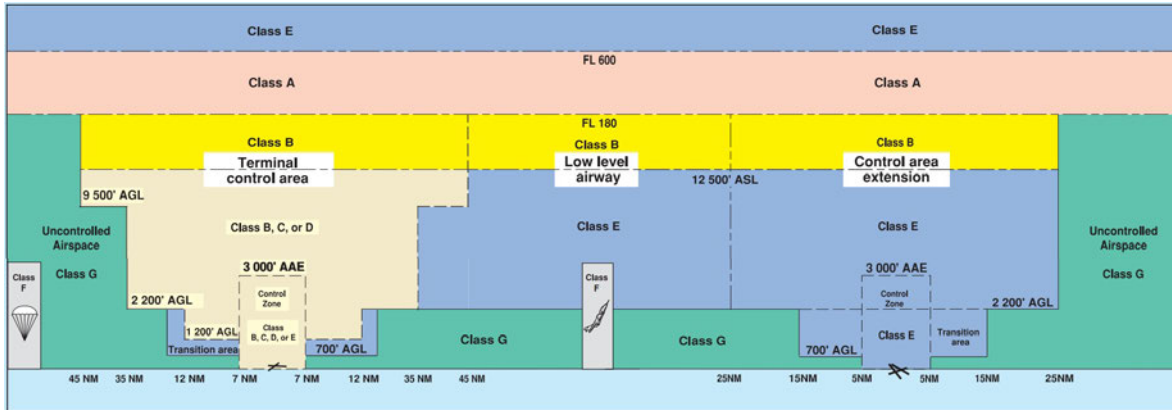
Flight Map



MAP Details

	Latitude	Longitude
 MODEL	43° 27' 45.10" N (43.463)	80° 18' 38.00" W (-80.311)
 Pilot	43° 27' 48.70" N (43.4635)	80° 18' 41.60" W (-80.3116)

Airspace Classification



Overlying Airspaces

Class	Name	Floor	Ceiling
B	Southern Ontario Low Level Control Area CAE	12500MSL	18000MSL
E	Southern Ontario Low Level Control Area CAE	2500MSL	6500MSL
E	Southern Ontario Low Level Control Area CAE	6500MSL	12500MSL
E	Toronto XPNDR MANDTRY	6500MSL	12500MSL
C	Kitchener/Waterloo CZ	SFC	4000MSL
F	GUELPH CORRIDOR	5500MSL	12500MSL
B	Windsor, ON TA	12500MSL	18000MSL
E	Windsor, ON TA	700AGL	12500MSL
E	T614 Airway	2200AGL	12500MSL
B	T614 Airway	12500MSL	18000MSL

Nearest Aerodromes & Distance from Operation

WATERLOO (CYKF AERODROME Cert)	Lat: 43.461	Long: 80.379	5.527 KM	2.98 NM
CAMBRIDGE (PUSLINCH LAKE) (CMB3 WATERDROME Reg)	Lat: 43.421	Long: 80.257	6.326 KM	3.42 NM
REIDS FIELD (CPE4 AERODROME Reg)	Lat: 43.443	Long: 80.232	6.703 KM	3.62 NM
GUELPH (CNC4 AERODROME Reg)	Lat: 43.564	Long: 80.196	14.582 KM	7.87 NM

Canadian Aviation Regulations

Division III — General Operating and Flight Rules

For full listing please visit <https://laws-lois.justice.gc.ca/eng/regulations/SOR-96-433/FullText.html#s-901.27>

Visual Line-of-sight

- **901.11 (1)** Subject to subsection (2) no pilot shall operate a remotely piloted aircraft system unless the pilot or a visual observer has the aircraft in visual line-of-sight at all times during flight.
- **(2)** A pilot may operate a remotely piloted aircraft system without the pilot or a visual observer having the aircraft in visual line-of-sight if the operation is conducted in accordance with a special flight operations certificate — RPAS issued under section 903.03.

Procedures

- **901.23 (1)** No pilot shall operate a remotely piloted aircraft system unless the following procedures are established:
 - **(a)** normal operating procedures, including pre-flight, take-off, launch, approach, landing and recovery procedures; and
 - **(b)** emergency procedures, including with respect to
 - **(i)** a control station failure,
 - **(ii)** an equipment failure,
 - **(iii)** a failure of the remotely piloted aircraft,
 - **(iv)** a loss of the command and control link,
 - **(v)** a fly-away, and
 - **(vi)** flight termination.
- **(2)** If the manufacturer of the remotely piloted aircraft system provides instructions with respect to the topics referred to in paragraphs (1)(a) and (b), the procedures established under subsection (1) shall reflect those instructions.
- **(3)** No pilot shall conduct the take-off or launch of a remotely piloted aircraft unless the procedures referred to in subsection (1) are reviewed before the flight by, and are immediately available to, each crew member.
- **(4)** No pilot shall operate a remotely piloted aircraft system unless the operation is conducted in accordance with the procedures referred to in subsection (1).

Site Survey

901.27 No pilot shall operate a remotely piloted aircraft system unless, before commencing operations, they determine that the site for take-off, launch, landing or recovery is suitable for the proposed operation by conducting a site survey that takes into account the following factors:

- **(a)** the boundaries of the area of operation;
- **(b)** the type of airspace and the applicable regulatory requirements;
- **(c)** the altitudes and routes to be used on the approach to and departure from the area of operation;
- **(d)** the proximity of manned aircraft operations;
- **(e)** the proximity of aerodromes, airports and heliports;
- **(f)** the location and height of obstacles, including wires, masts, buildings, cell phone towers and wind turbines;
- **(g)** the predominant weather and environmental conditions for the area of operation; and
- **(h)** the horizontal distances from persons not involved in the operation.

Operations at or in the Vicinity of an Aerodrome, Airport or Heliport

- **901.47 (1)** No pilot shall operate a remotely piloted aircraft at or near an aerodrome that is listed in the *Canada Flight Supplement* or the *Water Aerodrome Supplement* in a manner that could interfere with an aircraft operating in the established traffic pattern.
- **(2)** Subject to section 901.73 no pilot shall operate a remotely piloted aircraft at a distance of less than
 - **(a)** three nautical miles from the centre of an airport; and
 - **(b)** one nautical mile from the centre of a heliport.
- **(3)** No pilot shall operate a remotely piloted aircraft at a distance of less than three nautical miles from the centre of an aerodrome operated under the authority of the Minister of National Defence unless the operation is conducted in accordance with a special flight operations certificate — RPAS issued under section 903.03.

Records

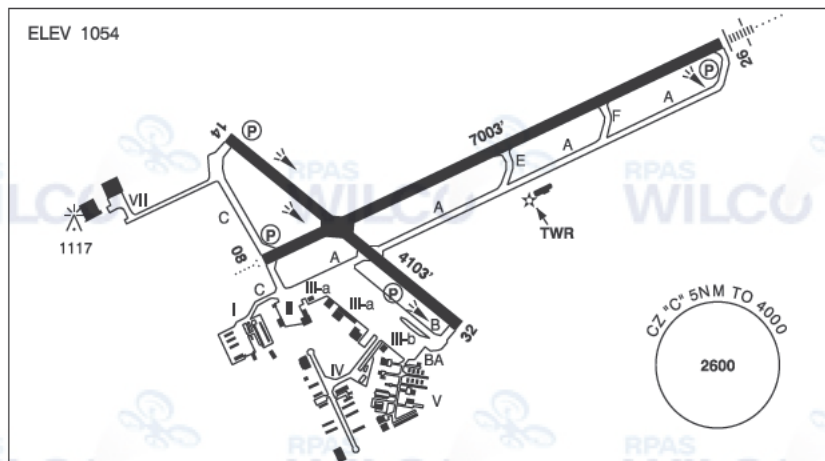
- **901.48 (1)** Every owner of a remotely piloted aircraft system shall keep the following records:
 - **(a)** a record containing the names of the pilots and other crew members who are involved in each flight and, in respect of the system, the time of each flight or series of flights and
 - **(b)** a record containing the particulars of any mandatory action and any other maintenance action, modification or repair performed on the system, including
 - **(i)** the names of the persons who performed them,
 - **(ii)** the dates they were undertaken,
 - **(iii)** in the case of a modification, the manufacturer, model and a description of the part or equipment installed to modify the system, and
 - **(iv)** if applicable any instructions provided to complete the work.
- **(2)** Every owner of a remotely piloted aircraft system shall ensure that the records referred to in subsection (1) are made available to the Minister on request and are retained for a period of
 - **(a)** in the case of the records referred to in paragraph (1)(a), 12 months after the day on which they are created; and
 - **(b)** in the case of the records referred to in paragraph (1)(b), 24 months after the day on which they are created.
- **(3)** Every owner of a remotely piloted aircraft system who transfers ownership of the system to another person shall, at the time of transfer, also deliver to that person all of the records referred to in paragraph (1)(b).

ONTARIO

AERODROME/FACILITY DIRECTORY

KITCHENER / WATERLOO ON

CYKF



REF	N43 27 39 W80 22 43 1E 10°W UTC-5(4) Elev 1054' VTA A5000 LO6 HI5 CAP OC
OPR	Regional Muni of Waterloo 519-648-2256 H24 Cert Ldg fees are applied to all acft above 2500 Kg max tkof wt
PF	A-1,3,6,7,8 B-2 avbl 13-20Z† Mon-Sat C-4,5
CUST	AOE/15 888-226-7277 Gen Avn only AOE/180 12-04Z† 519-648-3858/519-465-7723 2hrs PN
FLT PLN	
FIC	London 866-WXBRIEF (Toll free within Canada) or 866-541-4104 (Toll free within Canada & USA)
WX	METAR AUTO H24 (see COMM) WxCam TAF H24, issue times: 0140, 0740, 1340, 1940Z.
SERVICES	
FUEL	100LL, JA (FSII avbl), JA-1 (FSII avbl)
OIL	80, 100
S	1,2,3,4,5,6
ARFF	PARTICIPATING CAT 7 3 hr PN
JASU	Air Start
PVT ADV	Chartright 129.475 905-671-4674 11-23Z† O/T call out chg. Flite Line svc 130.5 519-514-0530 11-01Z† O/T call out chg. Summit Fuel Services 123.5 519-497-8091 12-02Z† O/T call out chg.
MIL CON	Flite Line Services Inc. 519-541-0530

ONTARIO

AERODROME / FACILITY DIRECTORY

KITCHENER / WATERLOO ON (Cont'd)

CYKF

RWY DATA	Rwy 14(138°)/32(318°) 4103x148 ASPH Rwy 08(075°)/26(255°) 7003x148 ASPH Rwy 26 down 0.44% RESA: 08 197'; 26 295'
RWY CERT	Rwy 14/32 AGN IIIA Rwy 08 RVR 1200(1/4sm)/Rwy 26 RVR 1200(1/4sm) AGN IIIB
TWY CERT	Twy B AGN IIIA
APRON	Apron I rstd to acft max wingspan 50'. Apron II rstd to acft max wingspan 55'. Turbine acft PPR. Apron IIIA tml apron for air carriers only. Rstd to acft max wingspan 118', larger acft PPR. Apron IIIB GA freight rstd to acft max wingspan 118', larger acft PPR. Apron IV rstd to acft max wingspan 118'. Apron V rstd to acft max wingspan 79'. Apron VII rstd to acft max wingspan 170'.
RCR	Aprt Ops 519-648-3370 CRFI/RSC avbl H24. PLR/PCN.
LIGHTING	08-AO(TE HI) P2, 14-(TE HI) P1, 26-AN(TE HI) P2, 32-(TE HI) P1 ARCAL-126.0 type K when twr clsd. PAPI Rwy 14, 32 and 26 not avbl on ARCAL, on continuously: low ints at SS minus 30 min to SR minus 30 min, high ints at SR minus 30 min to SS minus 30 min.
COMM	ATIS 125.1 12-04Z‡ GND Waterloo 121.8 12-04Z‡ TWR Waterloo 126.0 118.55 (V) 12-04Z‡ (emerg only 519-648-3055) MF tfc 126.0 04-12Z‡ 5NM 4000 ASL (CAR 602.98) ARR Toronto Tml 128.275 DEP Toronto Tml 128.275 PAL Toronto Ctr 128.275 AWOS 125.1 04-12Z‡
NAV	DME WATERLOO WT 115.0 Ch 97 N43 27 31 W80 22 46 (1047') ILS IKF 110.7 (Rwy 26) LOC reliable only within 10° either side of centreline.
RESTRICTIONS	OPERATING RESTRICTIONS: Acft with wingspans greater than 118' must use rwys, Twy C or Twy BA for taxiing.

ONTARIO

AERODROME / FACILITY DIRECTORY

KITCHENER / WATERLOO ON (Cont'd)

CYKF

PRO

Pursuant to CAR 602.105, the following procedures are in effect. Noise Abatement pro in effect for all acft. See CAP or VTPC. Pilots flying an inst apch pro to Rwy 26 take note: The pro turn overflies Guelph Aprt (circuit hgt 2100 ASL). Pilots flying an inst apch pro to Rwy 26 can anticipate delays and/or restrictions when Rwy 05 & 06R are in use at Toronto/Lester B. Pearson. IFR tng flts are to ctc National Traffic Management Unit (FLOW CTL) 800-268-4831 2 hrs prior to ETD or possible delays. VFR tfc outside CZ watch for apch acft oprg in vic of extended Rwy 26 centreline. VFR dep avoid noise sensitive areas at an operationally safe alt.

Pursuant to CAR 602.105, the following procedures are in effect. Rgt hand circuits Rwy 32 (CAR 602.96).

No VFR or IFR tng on Rwy 08 btwn 02-12Z±

REDUCED VISIBILITY OPERATING PROCEDURES (RVOP):

One acft permitted on manoeuvring area at a time dur RVOP. RVOP avbl 12-04Z± only.

VFR ARR/DEP ROUTES – ARRIVALS:

NOT BELOW 2600 ASL until advised by ATC. All routes end approximately 2 miles from airport then join circuit as per Tower clearance.

- Hwy 8/Hwy 401: From the West remain south of Hwy 401 until passing Hwy 8/Hwy 401 flyover. From the east remain South of 401 until 1 mile east of Hwy8/401
- Maryhill: pass one mile west of Maryhill
- Sunrise Centre- Hwy 7/8: Arrivals from the northwest avoid flight over noise sensitive areas denoted on VTPC until reaching Sunrise centre/Hwy7-8.

VFR ARR/DEP ROUTES – DEPARTURES:

NOT ABOVE 2100 ASL until advised by ATC. All routes begin approximately 2 miles from airport.

- Puslinch Lake: Remain North of Hwy 401 until clear of control zone.
- Conestoga College: Remain North of 401 until clear of control zone.

All VFR aircraft should anticipate arrival and departure instructions from air traffic control (ATC).

CAUTION

Winch-launched hang gliders, cable to 2000 AGL N43 33 18 W080 31 31 near St. Jacobs aprx 8.5NM NW of A/D.

CANADA WATER AERODROME SUPPLEMENT

Effective 0901Z 20 April 2023 to 0901Z 21 March 2024

B24. AERODROME/FACILITY DIRECTORY

CAMBRIDGE BAY NU (Cont'd)

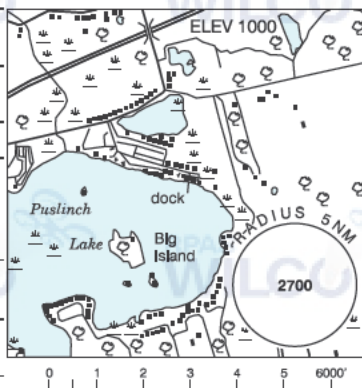
CJD7

NAV	NDB VOR/DME	CB 245 (H) N69 06 49 W105 00 54 YCB 112.7 Ch 74 N69 07 04 W105 10 22 (131°) VOR oriented on True Nor h.
PRO	Do not land on lakes btwn aprt & settlement as water is used for drinking.	
CAUTION	SW wind cause heavy seas. Cable span 0.5NM S of river mouth.	

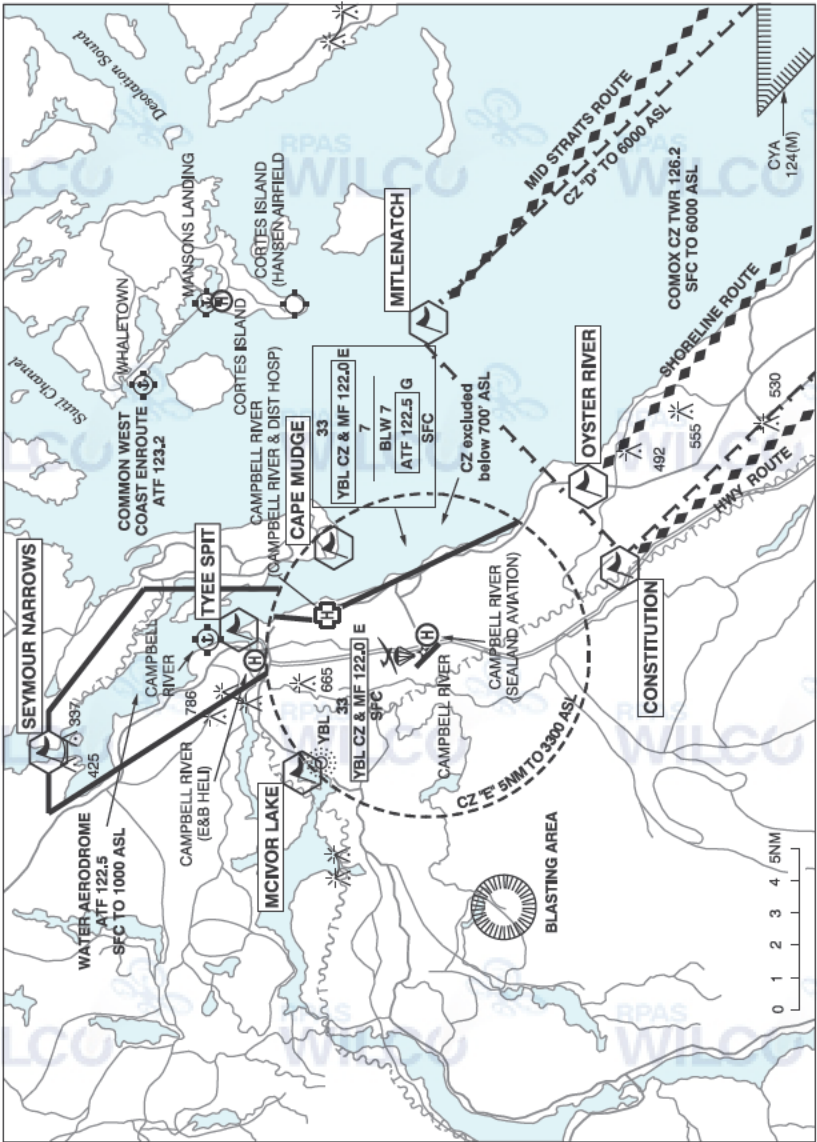
CAMBRIDGE (PUSLINCH LAKE) ON

CMB3

REF	N43 25 14 W80 15 25 3.5NE 10°W UTC-5(4) Elev 1000' VTA A5000
OPR	Ron & Yvonne Harper 519-496-2240 Reg PPR
PF	B-1 C-2,3,4,5,6
FLT PLN	FIC London 866-WXBRIEF (Toll free w/ in Canada) or 866-541-4104 (Toll Free within Canada & USA)
SERVICES	S 5, 7
A/D DATA	Open water Apr-Oct, mud & sand bottom. Docks depth 4'
COMM	ATF tfc 123.2 5NM 4000 ASL
CAUTION	Lake is 5.8NM from CYKF. Pilots may ctc YKF twr 126 0 on apch to lake for tfc advsy. Hvy boat tfc on wknds.



CAMPBELL RIVER VFR TERMINAL PROCEDURES CHART



ONTARIO

AERODROME/FACILITY DIRECTORY

CAMBRIDGE / REID'S FIELD ON

CPE4

REF	N43 26 34 W80 13 56 4NE 10°W UTC-5(4) Elev 1050' VTA A5000 LO6	
OPR	Reid's Heritage Homes Ltd 519-658-6656 Reg PPR	
PF	B-1 C-2,3,4,5,6	
FLT PLN		
FIC	London 866-WXBRIEF (Toll free within Canada) or 866-541-4104 (Toll free within Canada & USA)	
RWYDATA	Rwy 17/35 3745x45 asphalt Thld 35 displ 565'. Thld 17 displ 700'. Rwy 17 up 1%.	
RCR	Opr Ltd win maint	
LIGHTING	17-(TE ME), 35-(TE ME) ARCAL-123.2 type K	
COMM		
ATF	tfc 123.2 5NM 4100 ASL	
CAUTION	Anticipate windshear on apch Rwy 35 due trees E of thld Rwy 35. Bldg W of Rwy 17/35 within 150' of rwy centreline. Trees within 100' either side of Rwy 17/35, full length, 80 AGL 1130 ASL. Extv glider activity in area. 24" high aluminum rail along W side of rwy in touchdown zone of Rwy 17.	

ONTARIO

AERODROME/FACILITY DIRECTORY

GUELPH ON

CNC4

REF	N43 33 49 W80 11 45 1.3NE 10°W UTC-5(4) Elev 1100' VTA A5000 LO6	
OPR	Inglis Berry 519-716-0521 or 519-829-3300 Reg	
PF	B-1,2 C-3,4,5,6	
CUST	AOE/15 888-226-7277 14-21Z† Mon-Fri exc hols	
FLT PLN	FIG London 866-WXBRIEF (Toll free within Canada) or 866-541-4104 (Toll free within Canada & USA)	
SERVICES	FUEL 100LL H24 Cardlock S 1,2,3,5	
RWY DATA	Rwy 14(144°)/32(324°) 2562x100 GRASS/ASPH, centre 40' ASPH Rwy 06(056°)/24(236°) 2006x40 ASPH Thld 24 displ 730'	
RCR	Opr	
LIGHTING	14-(TE LO non-std), 32-(TE LO non-std) Ngt thld 253' fr end of Rwy 14 & 257' fr end of Rwy 32 Only 2053' lgt.	
COMM	ATF UNICOM ltd hrs O/T tfc 123.0 3NM 3000 ASL	
PRO	Tng Rwy 06/24 proh without prior authorization fr Transport Canada via ops specifications.	
CAUTION	Trees & antennas 234' N centreline Rwy 14/32 aprx 45 AGL. Trees 280' S centreline Rwy 06/24 aprx 65 AGL. Trees 1260' ASL aprx 1141' before Thld 24 on extended RCL. Steep apch Rwy 24 due to pvt road, terrain, and trees. Ditch & culvert 36' SSE thld Rwy 24. Aclt flying at Waterloo Regional aprt (10NM SW of Guelph aprt) Rwy 26 inst apch may overfly Guelph aprt at 3000 ASL. Glider activity 4NM WNW wknds & hols May-Nov. Aerobatics may be in progress within 1NM radius N43 34 W80 11 (immediately SE Rwy 06/24), 500 AGL-3500 ASL, Sat & Sun.	